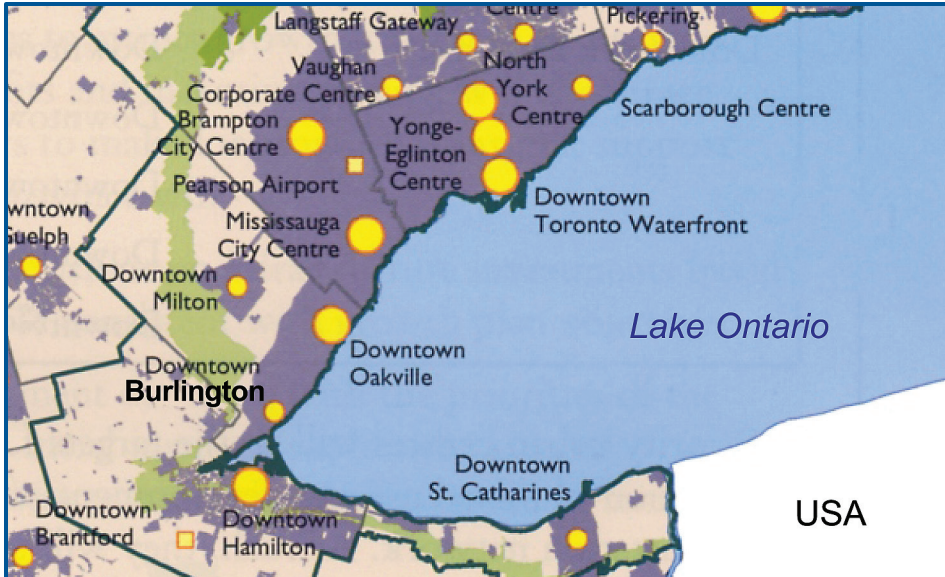


BURLINGTON *at a Glance*



Who lives here?

Residents (by age)	
Under 25	30%
25-49	36%
50-65	18%
66+	15%
Total number of occupied dwelling units:	63,000
Average number of persons per private household:	2.7
Persons per household percentage	
1-person household:	23%
2-person household:	34%
3-person household:	16%
4-person household:	24%
6+ person household:	2%
Average Income:	\$34,378
English is the first language of 81.8% of the population.	

Where is Burlington?

The City of Burlington is located in Southern Ontario on the north shore of Lake Ontario between Hamilton and Toronto at the west end of the Greater Toronto Area.

The city is a growing municipality with a population of approximately 165,000.

What is it like?

Burlington has a total land area of 187 sq. km (73 sq. miles or 46,300 acres). The main urban area is located south of the Parkway Belt and Hwy. 407. The land north of this, and north of Aldershot is used primarily for agriculture, rural residential and conservation purposes.

Geographical Features

The Niagara Escarpment, Lake Ontario and the sloping plain between the

escarpment and the lake make up the land area of Burlington. The city is no longer a port; sailing vessels in the area are used for recreational purposes and moor at a small marina in LaSalle Park. The 2.2 km long Skyway Bridge is a prominent landmark.

Climate

Burlington's climate is generally continental with warm, humid summers and cold, dry winters. This is moderated by the proximity of Lake Ontario which reduces temperature extremes. Monthly mean temperatures range from 22°C (71°F) in July to -5°C (23°F) in January. The annual precipitation is approximately 28 inches of rain and 51 inches of snow.

The average date for a late frost is May 3 and the first autumn frost occurs around the fifteenth day of October.

Brief History

Burlington was created on lands awarded in 1798 to Joseph Brant, the great Mohawk Chief, as a reward for his services to the British Crown during the American Revolutionary War, although an early pioneer George Chisholm, had already settled in the area in 1791.

In 1873, the adjacent hamlets of Wellington Square and Port Nelson became the village of Burlington. In 1914 Burlington became a town and in 1974 Burlington was incorporated as a city.

In the early days of Burlington, animal husbandry and fruit growing were



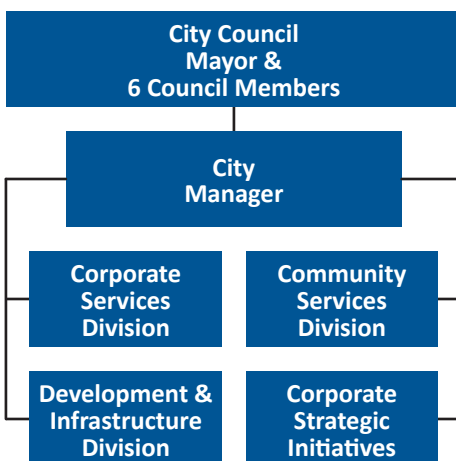
prominent activities and contributed to the area's rapid growth. Due to its strategic location, transportation corridors and milder climate, Burlington attracted, and continues to attract, industry, commerce and residential development.

Government

The City of Burlington is the largest of four municipalities in the Region of Halton. There are six wards in Burlington served by a mayor and six ward councillors; all of whom sit on both the Burlington City Council and the Halton Regional Council.

There are three federal and provincial ridings in Halton Region: Burlington, Halton and Oakville.

City Organization



Economy

Burlington is located in an area known as the Golden Horseshoe, the largest consumer and industrial market in Canada.

No single employer or job sector dominates Burlington's economy. The leading industrial sectors, in terms of employment, are food processing, packaging, electronics, motor vehicle/transportation, business services, chemical/pharmaceutical and environmental.

The top five private sector employers in Burlington are Maple Leaf Meats, Cogeco Cable, Evertz Microsystems, Boehringer Ingelheim and EMC².

The largest public sector employers in the city are the City of Burlington, the Halton District Board of Education, the Halton Catholic District School Board and Joseph Brant Memorial Hospital.

Lifestyle

Burlington maintains 580.78 hectares of park land and has a quality of life second to none. It offers four indoor and two outdoor pools, four splash pads, nine ice pads, six community centres and nine golf courses.

Some of the best hiking in the world can be done in the local sections of the Bruce Trail and the Niagara Escarpment, which is a UNESCO designated World Biosphere Reserve, as well as along the Waterfront Trail that runs along the northern shore of Lake Ontario.

You can relax and take in the Sound of Music Festival in June that features the world famous Burlington Teen Tour Band who have performed in Europe, Japan, the United States and throughout Canada.

Through its Mundialization Committee, Burlington promotes itself as a global community by fostering United Nations support at the local level and by maintaining twin city relationships with Itabashi, Japan and Apeldoorn in the Netherlands. This effort is realized through numerous community-based projects and the promotion of citizen exchanges in the areas of culture, business and education.

There is no daily newspaper published in Burlington. Papers delivered to Burlington include: the Hamilton Spectator, the Burlington Post, the Toronto Star, the Globe and Mail, the Toronto Sun and the National Post.

Attractions

Burlington is home to the Royal Botanical Gardens, which has the world's largest lilac collection. The Burlington Art Centre holds the world's largest collection of Contemporary Canadian Ceramics, many pieces of which are on permanent display. The Centre's exhibition spaces, which feature new exhibitions every eight to ten weeks, are fully accessible and are free of charge to visitors.

The museums of Burlington are also popular attractions and include Joseph Brant Museum and Ireland House at Oakridge Farm, a history museum depicting family life from the 1850s to the 1920s.

Burlington has the distinction of having one of the only two naturally occurring magnetic hills in Canada. The magnetic hill is located on King Road, north of Bayview Park.

Citizen Committees

Volunteer work touches every citizen in our community in almost every aspect of our daily lives and makes Burlington a great place to live. As a member of one of Burlington's citizen committees, you can actively participate in local government, which helps to ensure the high quality of life that Burlington enjoys. All citizen committees are established by council for the purpose of dealing with a specific issue and have a clearly defined mandate and terms of reference.

Future

The City of Burlington's plans for the future are outlined in a strategic plan called Future Focus VII. Issues such as responsive community, managed growth, economic development, environmental stewardship, financial management, transportation and transit and excellence in government are addressed in this document. Future Focus VII is available for download on the city's website.

For more information visit the city's website at www.burlington.ca.